

PXA Centrifugal pumps

Technical data

- Delivery rate
 $Q_{\max} = 500 \text{ l/min}$
- Delivery head
 $H_{\max} = 250 \text{ m}$
- Temperature range
 $T = -10^{\circ}\text{C to } +80^{\circ}\text{C}$
- Kinematic viscosity
 $\nu_{\max} = 20 \text{ mm}^2/\text{s}$

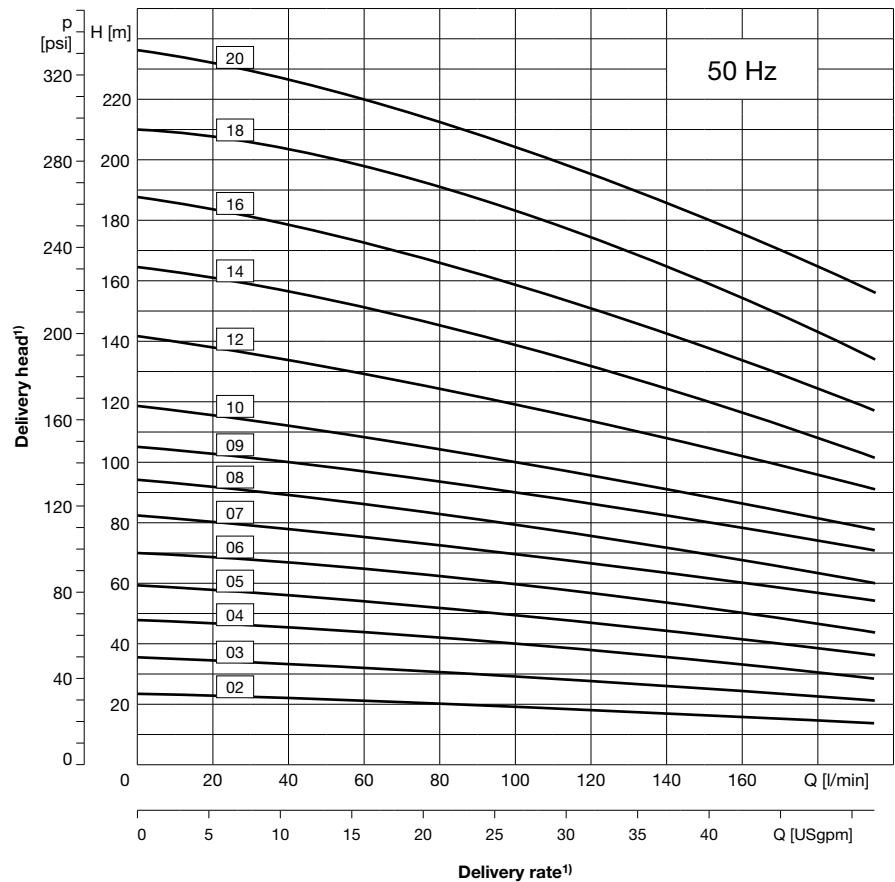


PXA 10 – Immersion pumps, sealless 50 Hz, closed impellers



Features

- Vertical multistage centrifugal pump
- For delivery of slightly contaminated fluids
- Installation directly into the reservoir
- Pressure port is located above the reservoir plate
- Pressure port is designed with internal thread G2



Technical Data

Delivery rate Q_{max}	195 l/min
Delivery head H_{max}	235 m
Immersion depth t_{max}	680 mm
Kinematic viscosity	max. 20 mm ² /s
Delivery temperature	-10 °C to +80 °C
Grain size	max. Ø2 mm
Contamination	max. 50 g/m ³
Direction of rotation	clockwise (as viewed looking down on the motor's ventilation side)
Fluids delivered	Emulsions, cooling and cutting oils, cleaning liquids, mild acids

Mechanical design

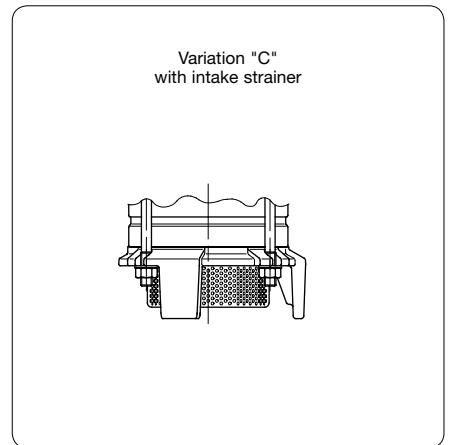
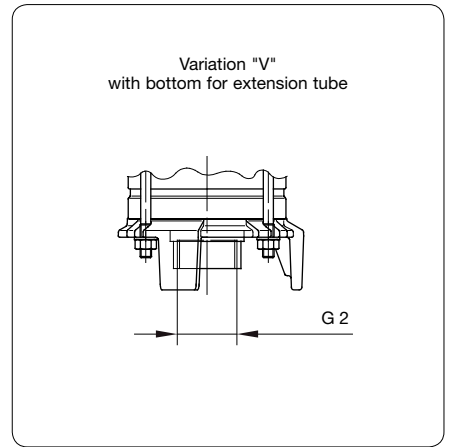
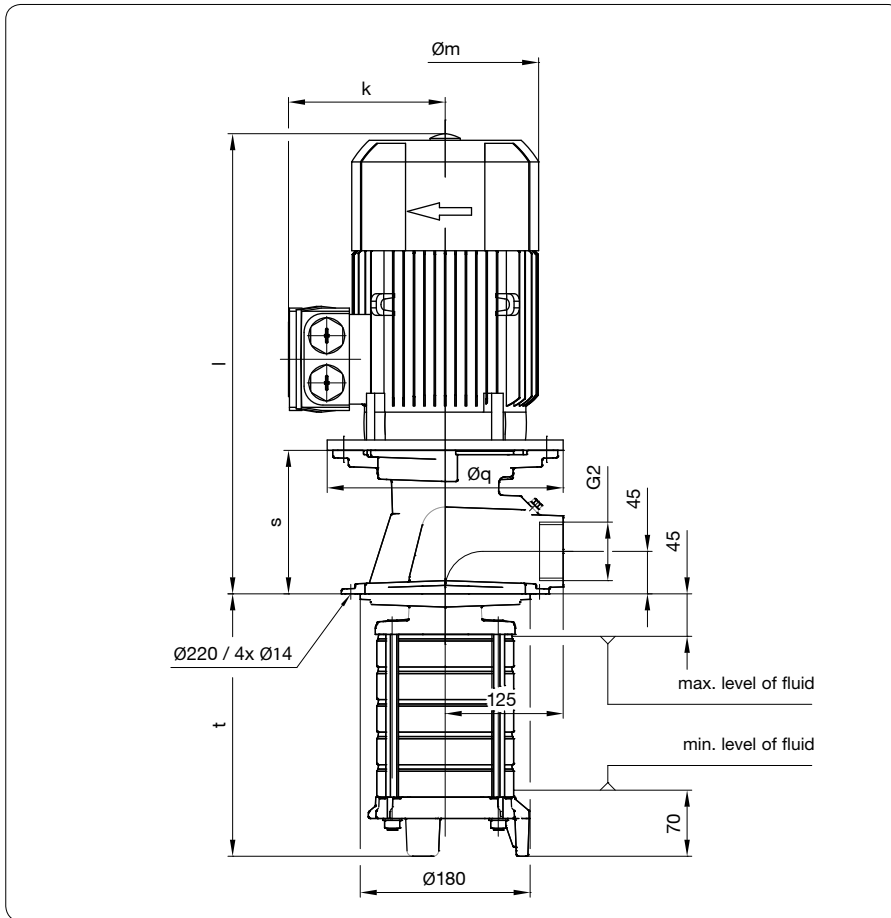
Component	Material
Flange	EN-GJS-400
Shaft	Stainless steel 1.4305
Impeller	Stainless steel 1.4301
Intermediate chamber	Stainless steel 1.4301
Tension anchor	Stainless steel 1.4057
Pumps bottom	EN-GJL-250
Elastomers	FPM
Bearings	Deep groove ball bearing with covering disk
Gap bush ($H_{max} < 150$ m)	POM
Mechanical seal ($H_{max} > 150$ m)	WC, Carbide, FPM, Stainless steel 1.4571

Variations

Component	Material
Mechanical seal	WC, Carbide, FPM, Stainless steel 1.4571
Bottom for extension tube	Stainless steel 1.4301
Intake strainer	Stainless steel 1.4301

¹⁾ Data for viscosity of ~1 mm²/s at a density of ~1 kg/dm³. Minimum volumetric flow: 5 to 10 % of nominal delivery rate.

PXA 10 – Immersion pumps, sealless 50 Hz, closed impellers



PXA

Electrical data, dimensions and weights at 50 Hz

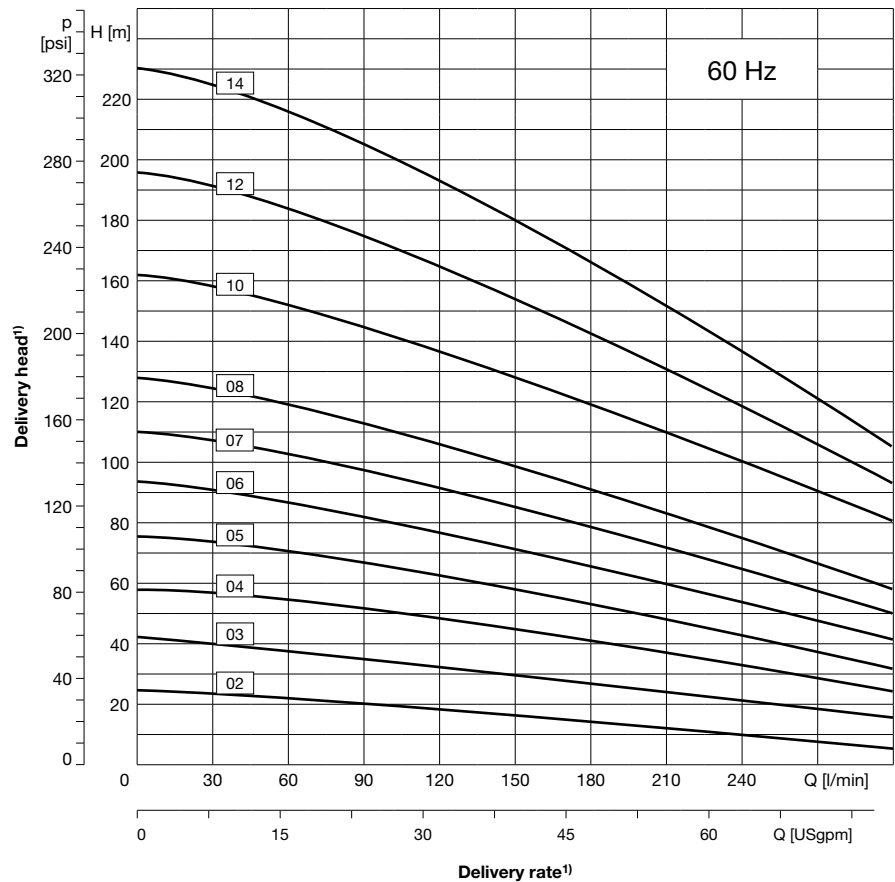
Type of pump			Immer- sion depth t [mm]	Rated motor values				Dimensions [mm]					Weight [kg]	Sonic pressure [dBA]	Pressure port (DIN ISO 228)		
Series	Frame size	Stages		Voltage Δ/Y U [V]	Motor index	Output P _N [kW]	Current Δ/Y I _N [A]	Speed n _N [min ⁻¹]	Øm	k	l	Øq				s	
PXA	10	02	194	230/400	G	0,75	2,75/1,56	2850	159	121	384	200	132	28	60	G2	
		03	221		H	1,1	3,95/2,25	2885			419			30			
		04	248		J	1,5	5,2/3,0	2910			439			34			
		05	275		K	2,2	7,4/4,2	2910			178			126			479
		06	302						40								
		07	329		L	3,0	9,9/5,6	2920	198	166	523	250	152	48			67
		08	356											48			
		09	383		M	4,0	12,7/7,3	2945	222	177	506	250	152	57			69
		10	410	58													
		12	464	Δ 400	N	5,5	Δ 9,9	2950	262	202	598	300	203	75	68		
		14	518											76			
		16	572											77			
		18	626											93			
		20	680											94			

PXA 10 – Immersion pumps, sealless 60 Hz, closed impellers



Features

- Vertical multistage centrifugal pump
- For delivery of slightly contaminated fluids
- Installation directly into the reservoir
- Pressure port is located above the reservoir plate
- Pressure port is designed with internal thread G2



Technical Data

Delivery rate Q_{max}	300 l/min
Delivery head H_{max}	230 m
Immersion depth t_{max}	518 mm
Kinematic viscosity	max. 20 mm ² /s
Delivery temperature	-10 °C to +80 °C
Grain size	max. Ø2 mm
Contamination	max. 50 g/m ³
Direction of rotation	clockwise (as viewed looking down on the motor's ventilation side)
Fluids delivered	Emulsions, cooling and cutting oils, cleaning liquids, mild acids

Mechanical design

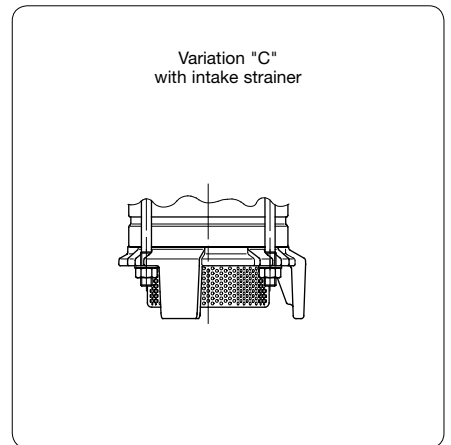
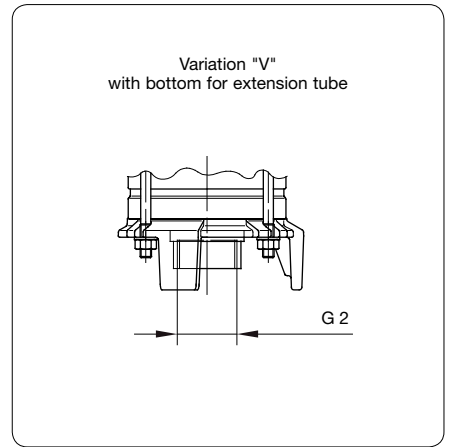
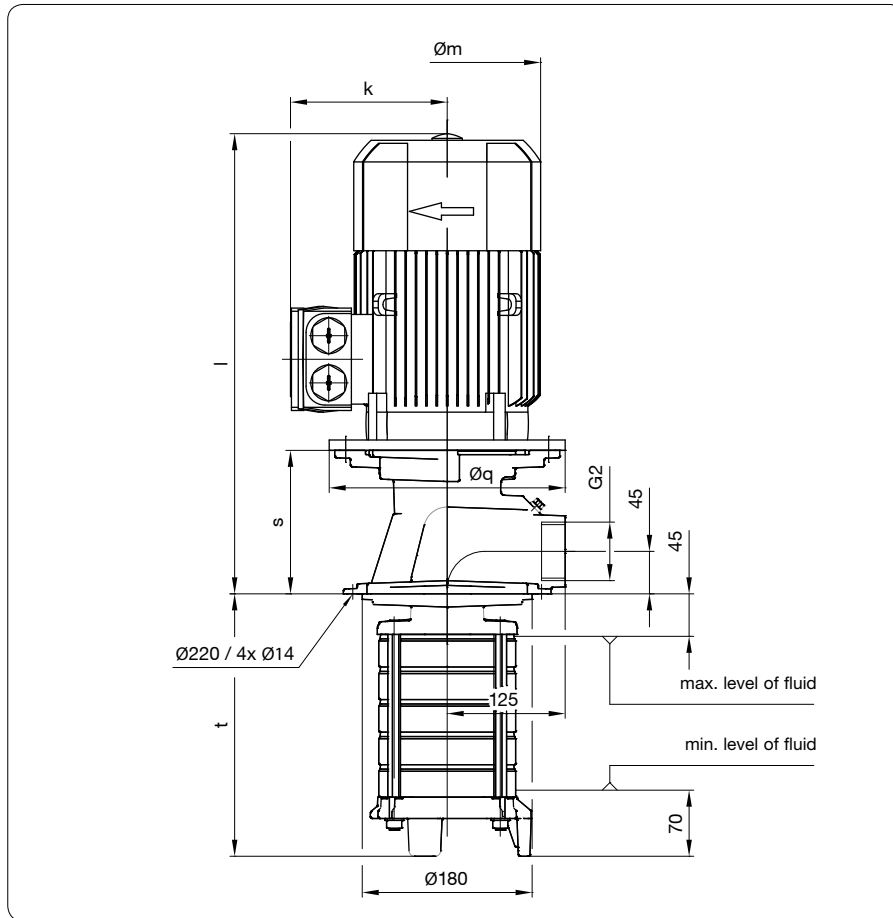
Component	Material
Flange	EN-GJS-400
Shaft	Stainless steel 1.4305
Impeller	Stainless steel 1.4301
Intermediate chamber	Stainless steel 1.4301
Tension anchor	Stainless steel 1.4057
Pumps bottom	EN-GJL-250
Elastomers	FPM
Bearings	Deep groove ball bearing with covering disk
Gap bush ($H_{max} < 150$ m)	POM
Mechanical seal ($H_{max} > 150$ m)	WC, Carbide, FPM, Stainless steel 1.4571

Variations

Component	Material
Mechanical seal	WC, Carbide, FPM, Stainless steel 1.4571
Bottom for extension tube	Stainless steel 1.4301
Intake strainer	Stainless steel 1.4301

¹⁾ Data for viscosity of ~1 mm²/s at a density of ~1 kg/dm³. Minimum volumetric flow: 5 to 10 % of nominal delivery rate.

PXA 10 – Immersion pumps, sealless 60 Hz, closed impellers



PXA

Electrical data, dimensions and weights at 60 Hz

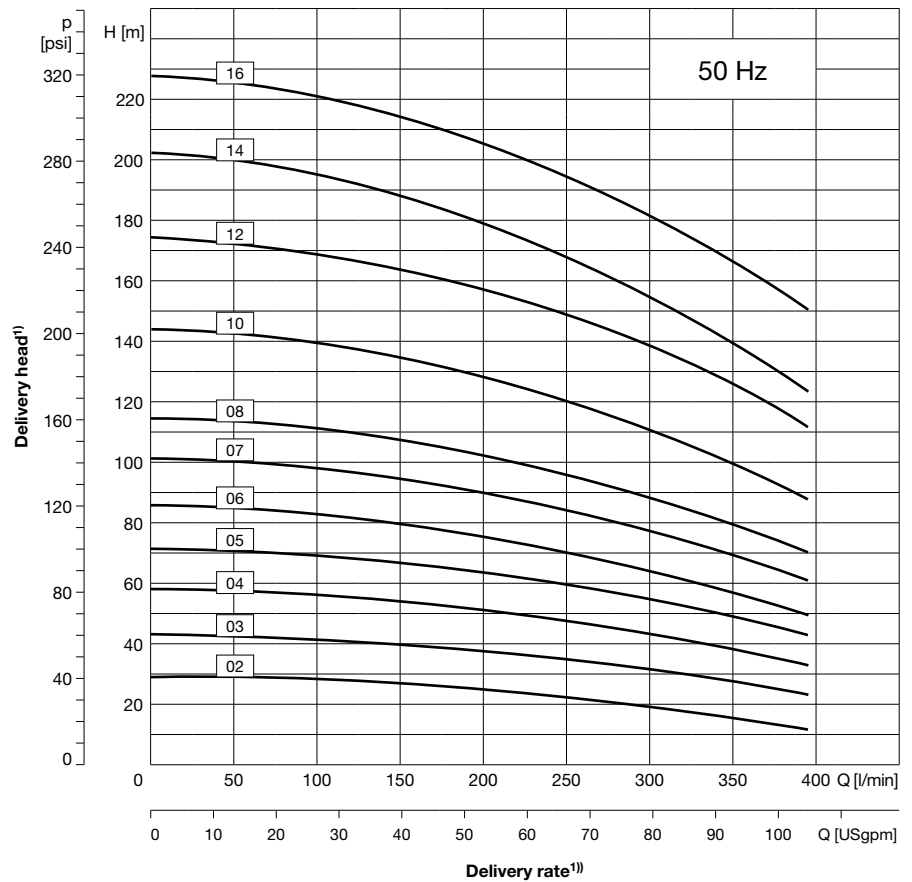
Type of pump			Immer- sion depth t [mm]	Rated motor values				Dimensions [mm]					Weight [kg]	Sonic pressure [dBA]	Pressure port (DIN ISO 228)	
Series	Frame size	Stages		Voltage Δ/Y U [V]	Motor index	Output P _N [kW]	Current Δ/Y I _N [A]	Speed n _N [min ⁻¹]	$\varnothing m$	k	l	$\varnothing q$				s
PXA	10	02	194	Y 460	J	1,75	Y 2,95	3510	178	126	439	200	142	33	69	G2
		03	221		K	2,54	Y 4,2	3510			479	200	142	38		
		04	248		L	3,45	Y 5,6	3515	198	166	523	250	152	46		
		05	275											46		
		06	302											55		
		07	329	Δ 460	N	6,3	Δ 9,8	3545	262	202	598	300	203	71	72	
		08	356											72		
		10	410											87		
		12	464											89		
		14	518											P		

PXA 18 – Immersion pumps, sealless 50 Hz, closed impellers



Features

- Vertical multistage centrifugal pump
- For delivery of slightly contaminated fluids
- Installation directly into the reservoir
- Pressure port is located above the reservoir plate
- Pressure port is designed with internal thread G2



Technical Data

Delivery rate Q_{max}	390 l/min
Delivery head H_{max}	230 m
Immersion depth t_{max}	692 mm
Kinematic viscosity	max. 20 mm ² /s
Delivery temperature	-10 °C to +80 °C
Grain size	max. Ø2 mm
Contamination	max. 50 g/m ³
Direction of rotation	clockwise (as viewed looking down on the motor's ventilation side)
Fluids delivered	Emulsions, cooling and cutting oils, cleaning liquids, mild acids

Mechanical design

Component	Material
Flange	EN-GJS-400
Shaft	Stainless steel 1.4305
Impeller	Stainless steel 1.4301
Intermediate chamber	Stainless steel 1.4301
Tension anchor	Stainless steel 1.4057
Pumps bottom	EN-GJL-250
Elastomers	FPM
Bearings	Deep groove ball bearing with covering disk
Gap bush ($H_{max} < 150$ m)	POM
Mechanical seal ($H_{max} > 150$ m)	WC, Carbide, FPM, Stainless steel 1.4571

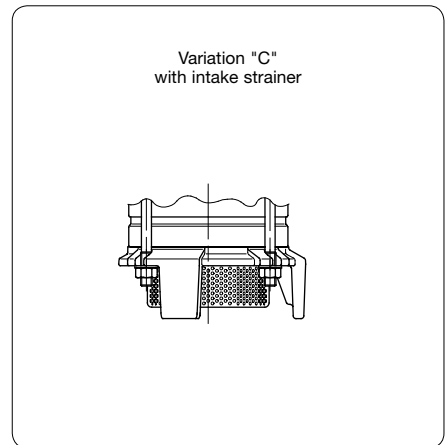
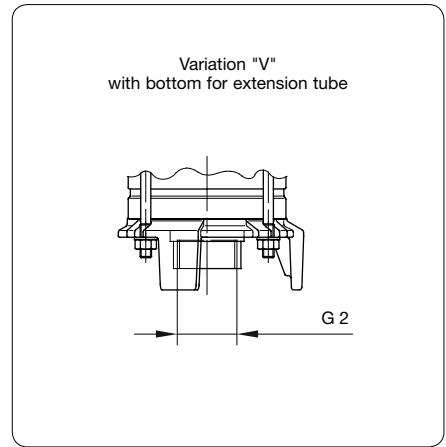
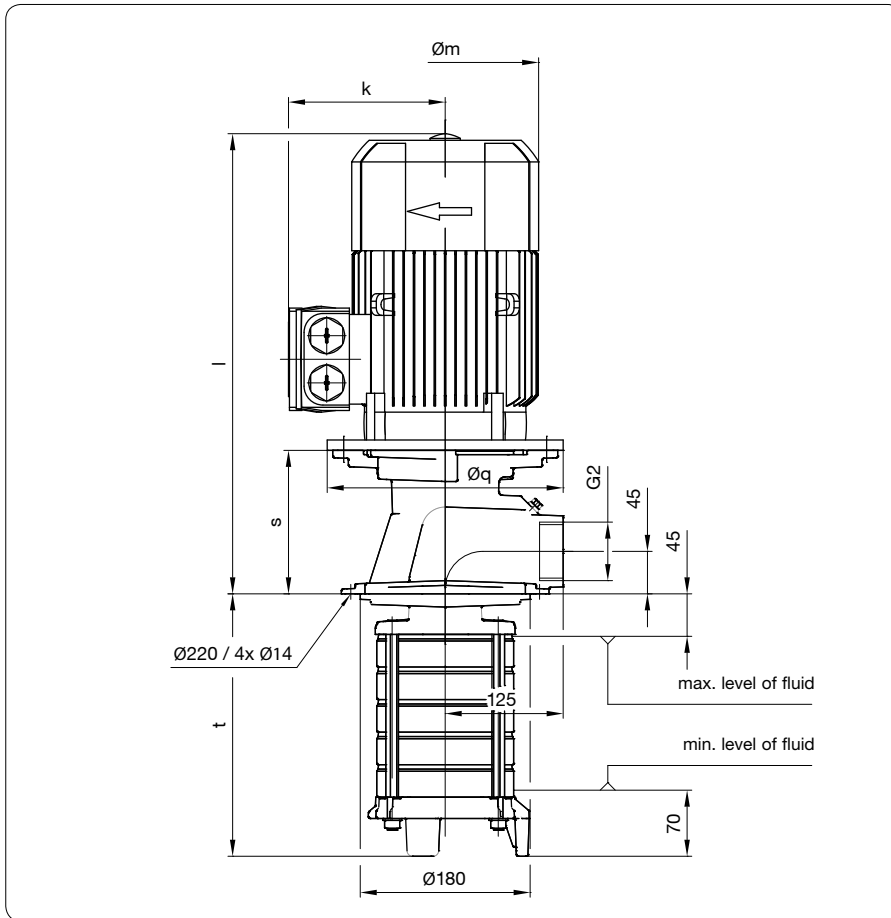
Variations

Component	Material
Mechanical seal	WC, Carbide, FPM, Stainless steel 1.4571
Bottom for extension tube	Stainless steel 1.4301
Intake strainer	Stainless steel 1.4301

¹⁾ Data for viscosity of ~1 mm²/s at a density of ~1 kg/dm³. Minimum volumetric flow: 5 to 10 % of nominal delivery rate.

PXA 18 – Immersion pumps, sealless

50 Hz, closed impellers



PXA

Electrical data, dimensions and weights at 50 Hz

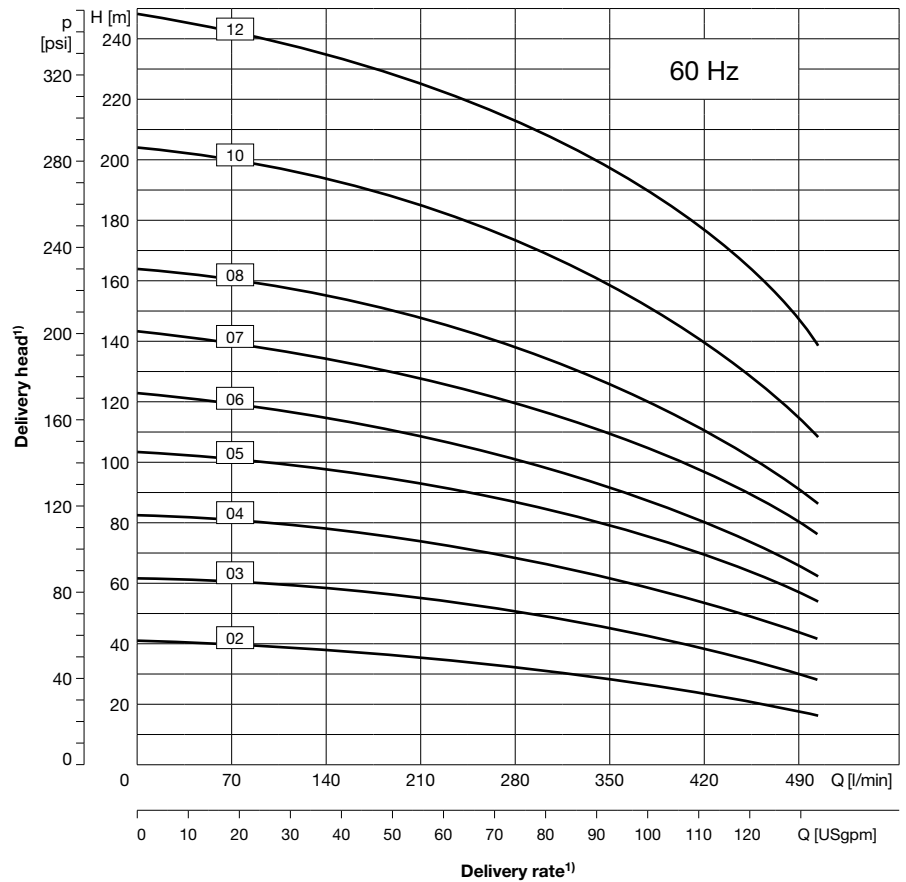
Type of pump			Immer- sion depth t [mm]	Rated motor values				Dimensions [mm]					Weight [kg]	Sonic pressure [dBA]	Pressure port (DIN ISO 228)	
Series	Frame size	Stages		Voltage Δ/Y U [V]	Motor index	Output P _N [kW]	Current Δ/Y I _N [A]	Speed n _N [min ⁻¹]	$\varnothing m$	k	l	$\varnothing q$				s
PXA	18	02	210	230/400	K	2,2	7,4/4,2	2910	178	126	479	200	142	37	65	G2
		03	244		L	3,0	9,9/5,6	2920	198	166	523	250	152	46		
		04	279		M	4,0	12,7/7,3	2945	222	177	506	250	152	55		
		05	313		N	5,5	Δ 9,9	2950	262	202	598	300	203	71		
		06	348	Δ 400	O	7,5	Δ 13,1	2950	262	202	648	300	203	86	68	
		07	382											87		
		08	417											88		
		10	485	70	P	11,0	Δ 19,6	2955	314	237	727	350	233	112	70	
		12	554											113		
		14	623											124		
		16	692											126		

PXA 18 – Immersion pumps, sealless 60 Hz, closed impellers



Features

- Vertical multistage centrifugal pump
- For delivery of slightly contaminated fluids
- Installation directly into the reservoir
- Pressure port is located above the reservoir plate
- Pressure port is designed with internal thread G2



Technical Data

Delivery rate Q_{max}	500 l/min
Delivery head H_{max}	250 m
Immersion depth t_{max}	554 mm
Kinematic viscosity	max. 20 mm ² /s
Delivery temperature	-10 °C to +80 °C
Grain size	max. Ø2 mm
Contamination	max. 50 g/m ³
Direction of rotation	clockwise (as viewed looking down on the motor's ventilation side)
Fluids delivered	Emulsions, cooling and cutting oils, cleaning liquids, mild acids

Mechanical design

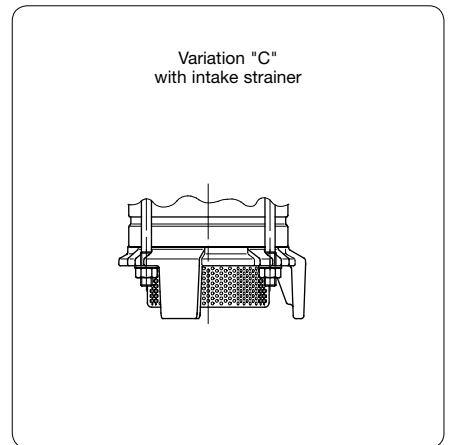
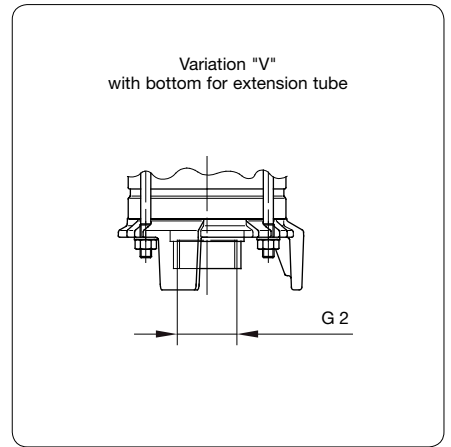
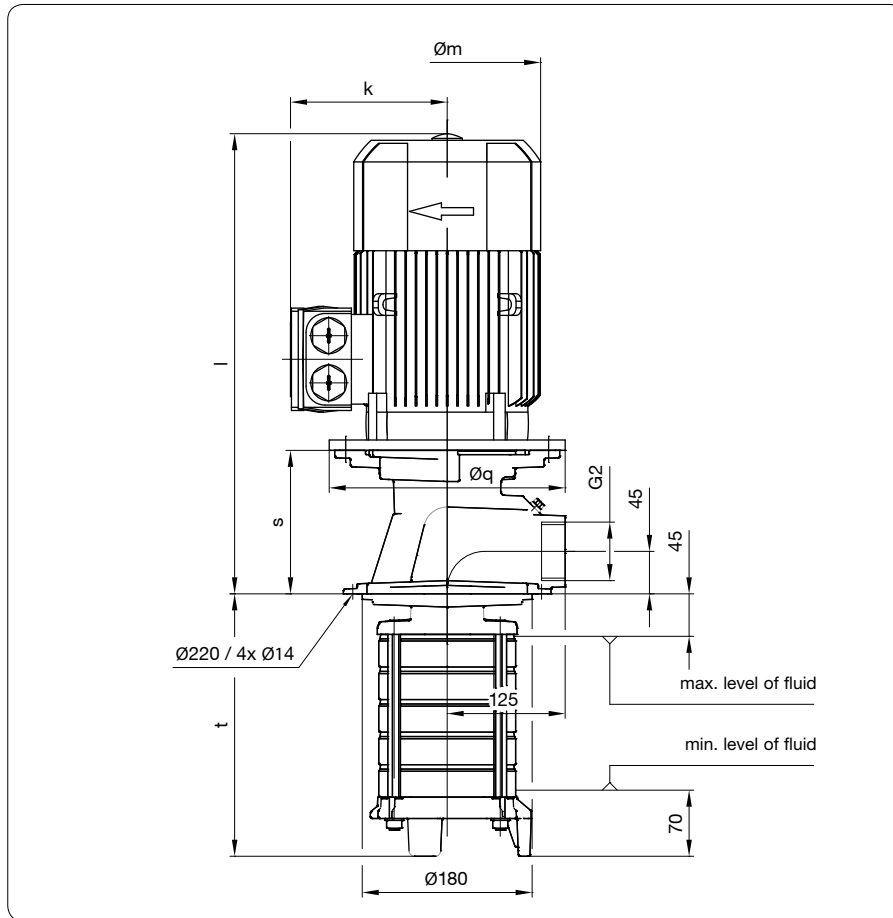
Component	Material
Flange	EN-GJS-400
Shaft	Stainless steel 1.4305
Impeller	Stainless steel 1.4301
Intermediate chamber	Stainless steel 1.4301
Tension anchor	Stainless steel 1.4057
Pumps bottom	EN-GJL-250
Elastomers	FPM
Bearings	Deep groove ball bearing with covering disk
Gap bush ($H_{max} < 150$ m)	POM
Mechanical seal ($H_{max} > 150$ m)	WC, Carbide, FPM, Stainless steel 1.4571

Variations

Component	Material
Mechanical seal	WC, Carbide, FPM, Stainless steel 1.4571
Bottom for extension tube	Stainless steel 1.4301
Intake strainer	Stainless steel 1.4301

¹⁾ Data for viscosity of ~1 mm²/s at a density of ~1 kg/dm³. Minimum volumetric flow: 5 to 10 % of nominal delivery rate.

PXA 18 – Immersion pumps, sealless 60 Hz, closed impellers



PXA

Electrical data, dimensions and weights at 60 Hz

Type of pump			Immer- sion depth t [mm]	Rated motor values					Dimensions [mm]					Weight [kg]	Sonic pressure [dBA]	Pressure port (DIN ISO 228)
Series	Frame size	Stages		Voltage Δ/Y U [V]	Motor index	Output P _N [kW]	Current Δ/Y I _N [A]	Speed n _N [min ⁻¹]	Øm	k	l	Øq	s			
PXA	18	02	210	Y 460	M	4,55	Y 7,2	3550	222	177	506	250	152	52,9	73	G2
		03	244											58,7		
		04	279											84,2		
		05	313	Δ 460	O	8,6	Δ 13,0	3550	262	202	648	300	203	85,1	72	
		06	348											107,9		
		07	382											108,8		
		08	417											118,7		
		10	485											130,5		
12	554	132,3	77													



PXA 10/18 – Immersion pumps, sealless

Order key

PXA

	P	X	A															
Series																		
Frame size																		
To determine the fram size the corresponding characteristics has to be used. 10, 18																		
Stages																		
To determine the desired number of stages the corresponding characteristics has to be used. 02 = 2-stages ... 20 = 20-stages																		
Materials																		
G = gray cast iron (standard)																		
Seal																		
B = gap bush G = machanical seal																		
Pump design																		
S = standard design V = bottom for extension tube C = bottom for intake strainer																		
Immersion depth in mm																		
To determine the desired immersion depth the appropriate table "Electrical data, dimensions and weights" has to be used. 194 = 194 mm ... 692 = 692 mm																		
Motor index																		
To determine the desired motor index the appropriate table "Electrical data, dimensions and weights" has to be used. Example: J = 1,5 kW																		
Power supply																		
01 = 230/400 V at 50 Hz (to 4 kW) 265/460 V at 60 Hz (to 4,6 kW) 02 = Δ400 V at 50 Hz (from 5,5 kW) Δ460 V at 60 Hz (from 6,3 kW) 05 = Standard for Europe 230/400 V at 50 Hz (from 4 kW) Δ400 V at 50 Hz (from 5,5 kW) ... further designs on request																		
Motor design																		
BA = standard (insulation class F, IP 54, 2-pole, IE2) CA = standard (insulation class F, IP 54, 2-pole, IE3) ... further designs on request ... further designs on request																		
Order example: PXA1009GBS383M05BA Series: PXA , Frame size: 10 , 09 -stages, Material: G grey cast iron, Seal: B gap bush, Pump design: S standard design, Immersion depth: 383 mm, Motor index: M 4,0 kW, Power supply: 05 230/400 V 50 Hz (< 4 kW), Motor design: CA Standard (IE3)																		

* All data and measurements refer to the IE3-motors.

The contents of this publication are the copyright of the publisher and may not be reproduced (even extracts) unless our written permission is granted. Every care has been taken to ensure the accuracy of the information contained in this publication, but no liability can be accepted for any loss or damage whether direct, indirect or consequential, arising out of use of the information contained herein.

SKF Lubrication Systems Germany GmbH
Product department Spandau Pumps

Motzener Strasse 35/37 · 12277 Berlin · Germany
PF 970444 · 12704 Berlin · Germany
Tel. +49 (0)30 72002-0 · Fax +49 (0)30 72002-261
SpandauPumpen@skf.com
www.spandaupumpen.com

This brochure was presented by: